

# RIDGECREST INFORMATION

Ridgecrest is a growing community that offers a wide range of activities, especially for the outdoor enthusiast. A major tourist attraction for Ridgecrest is being located within two hours of the highest (Mount Whitney) and lowest points (Death Valley) in the contiguous U.S.

- Parks
- Local shopping
- Restaurants

Learn more at [www.goridgecrest.com](http://www.goridgecrest.com)

## POINTS OF INTEREST:

- Death Valley National Park
- Desert Tortoise Natural Area (California's State Reptile)
- Festivals and Fairs
- Fossil Falls
- Historic Rand Mining District
- Historic USO Building
- Jawbone Canyon
- Kennedy Meadows
- Kern River
- Lake Isabella
- Mount Whitney
- Museums (Maturango Museum and China Lake Museum)
- Parade of 1,000 Flags
- Petroglyphs
- Public library
- Red Rock Canyon State Park
- Ridgecrest Cinemas
- Robbers Roost
- Sequoia National Forest
- Trona Pinnacles
- Walkers Pass





# COMMUNITY FACTS

- Population 2018: 35,898
- 2,290 feet above sea level
- Commute time: 13.8 minutes one-way, shorter than the US average of 26 minutes.
- As the only incorporated community in the Indian Wells Valley, Ridgecrest acts as the urban center for northeastern Kern, Inyo and San Bernardino Counties.
- The City's incorporated area includes approximately 13,300 acres and is located in the Mojave Desert, east of the Sierra Nevada Mountains and west of Death Valley National Park.
- NAWS China Lake is an airborne weapons testing and training range located adjacent to Ridgecrest and operated by the United States Navy and its contractors.
- California is the 3rd largest state in the U.S. and has a very diverse geography. Ridgecrest is just a car ride away to mountains, beaches, Death Valley and major cities.

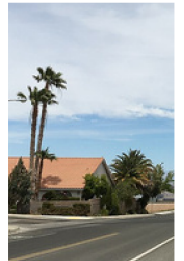


## WEATHER:

- Average annual rainfall..1" (The US average is 39" of rain per year)
- Average days of sunshine per year..279 (The US average is 205 sunny days)
- Annual high temperature...103°F
- Annual low temperature...32°F

## MARKET DATA:

- Average household income \$71,774 (median)
- The median home value in Ridgecrest...\$260-285K.
- Average monthly rent cost of a 2BR apartment...\$900-1,500



# EDUCATION

**Ridgecrest offers educational opportunities for all ages.**

- Ridgecrest has one of the highest rates of PhD per capita in America.
- Sierra Sands Unified School District serves a student population of 4,950 students with a 90% graduation rate and offers: 8 elementary schools, 2 middle schools and 2 high schools.
- The district's primary high school is Sherman E Burroughs High School, serving 1,453 students. Mesquite High School is an alternative high school in the area.
- Ridgecrest Charter School is a tuition-free public school supported by the California State Board of Education. Opened in 2001, the school educates children from Transitional K to the 8th grade. It is the only public school in Ridgecrest that combines both elementary and junior high. There are a number of private school options in the area, including Immanuel Christian School, which has a 100% high school graduation rate and 90% of students attend colleges and universities.
- Cero Coso Community College is one of three colleges in the Kern Community College District.